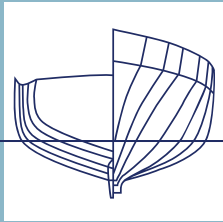


KROGEN  
YACHTS

AT HOME ON ANY SEA



Krogen 48 AE





# The Philosophy



## WELCOME TO KROGEN YACHTS, WHERE YOU'RE AT HOME ON ANY SEA.

At Krogen Yachts, we build extremely reliable, safe, and seaworthy yachts that provide our owners with the ultimate in luxurious, trans-oceanic, bluewater cruising.

When you build with Krogen, you become part of a tradition for passagemaking excellence that dates back to 1976, when founders Art Kadey and Jim Krogen created a 42-footer that combined the proven seakeeping attributes of commercial ships with the onboard amenities and a level of livability fit for the recreational yachting market.

That first hull—with the onboard volume and seaworthiness to comfortably carry her owners across oceans—was the basis of our exclusive Pure Full Displacement hullform, that we still build on today.

Each of our models are designed around the same core philosophy—a Pure Full Displacement hull fitted out with an interior designed and built to exacting expectations.

We proudly offer customers a lineup of seven models ranging from 44 to 70 feet that allow our customers to live out their bluewater cruising dreams. Because one thing we've learned over our nearly 50 years of boatbuilding is that it's your adventures, your love of your boats, and the community that our owners have built that we're most proud of.

Lets go cruising.

EVERY KROGEN IS BASED ON PROVEN  
DESIGN AND ENGINEERING PRINCIPLES  
ALLOWING OUR BOATS TO CROSS  
OCEANS IN COMFORT.

## About the Krogen 48

We challenge you to find another bluewater-capable yacht at this size that is as spacious, comfortable, and built to the exacting standards as the Krogen 48. This proven yacht stands out as an unrivaled liveaboard, while retaining superior running characteristics, reliability, and exceptional seaworthiness and safety. Like each Krogen-built yacht, the 48 blends traditional, timeless design with the most recent technical advances and innovation. The goal of the Krogen 48 is to represent each owner's taste and preference, complemented by our nearly five decades of boating experience.

Seasoned passagemakers appreciate the Krogen 48's seakindly ride and the fine entry that slices through waves versus plowing through them, consuming less energy. V-shaped after sections slice following seas without creating a surfing motion. This also translates to comfort and safety on board, allowing you to arrive at your destination well rested. And, with less resistance and drag overall, Krogen Yachts engineering delivers better fuel economy. The Krogen 48 is designed and built to be both an all-oceans-capable passagemaker with a range of more than 4,700 miles, as well one of the most comfortable trawler yachts in its class.

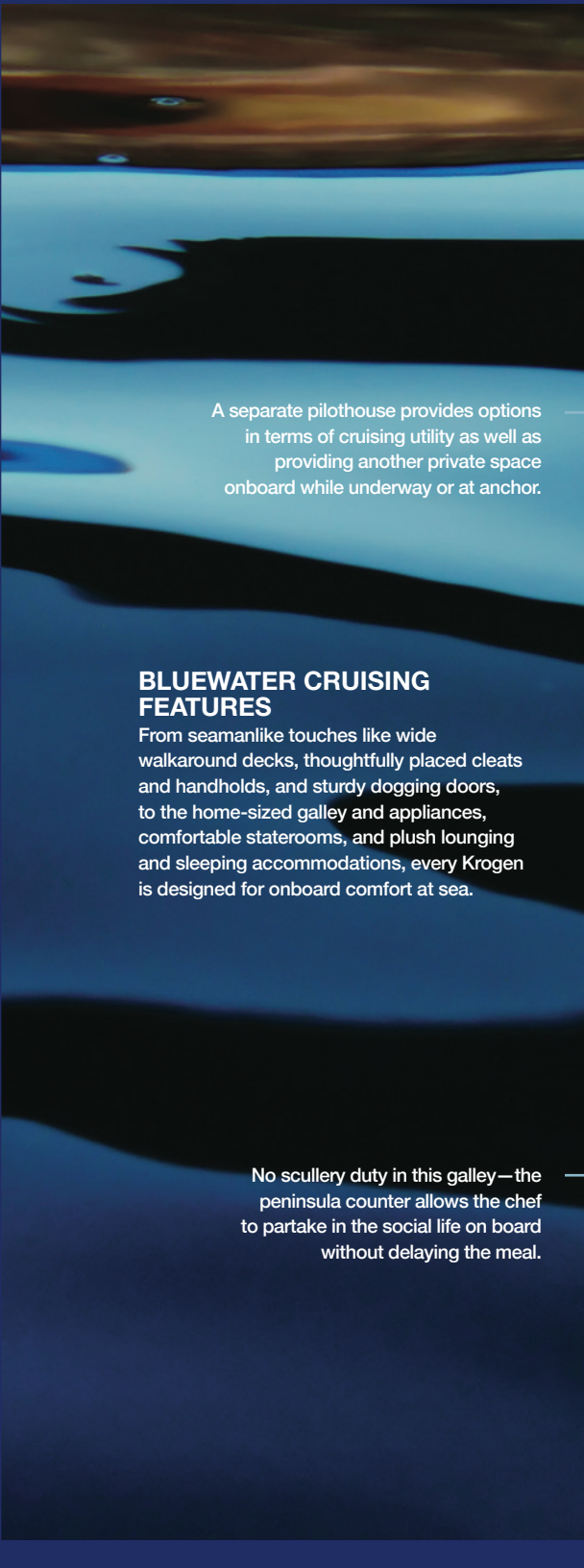
The Krogen 48 is the sum of many design developments, including the option to forgo the port side deck and push the saloon to the rail, providing even more interior space for the saloon and galley area. It's this kind of thinking that helps Krogen owners find a yacht that works for them over the long haul.

And if it's the long haul a prospective owner is thinking about, this model has the equipment to match the mission, and then some. The robust hull is solid fiberglass below the waterline, a sturdy layout to be sure. Corecell foam is used in the superstructure to lower the center of gravity even more. Aluminum fuel tanks offer 1,000 gallons of capacity, and sight gauges ensure confidence and reliability.

This trans-oceanics range is all the better to enjoy thanks to the layout and design of the Krogen 48. A pilothouse is one key to safe and comfortable ocean passages, and this one is up to the task. A second head compartment is offered in one layout, or the space can be outfitted as a second stateroom for guest accommodations. An office makes it possible to run the ship's business (or even an onshore business) while you're on board and expands the accommodations potential even more.



A well-thought-out sideboard adds counterspace in the galley area, an optional wine fridge, and stowage accessible easily from the galley or the saloon.



A separate pilothouse provides options in terms of cruising utility as well as providing another private space onboard while underway or at anchor.

## BLUEWATER CRUISING FEATURES

From seamanlike touches like wide walkaround decks, thoughtfully placed cleats and handholds, and sturdy dogging doors, to the home-sized galley and appliances, comfortable staterooms, and plush lounging and sleeping accommodations, every Krogen is designed for onboard comfort at sea.

No scullery duty in this galley—the peninsula counter allows the chef to partake in the social life on board without delaying the meal.





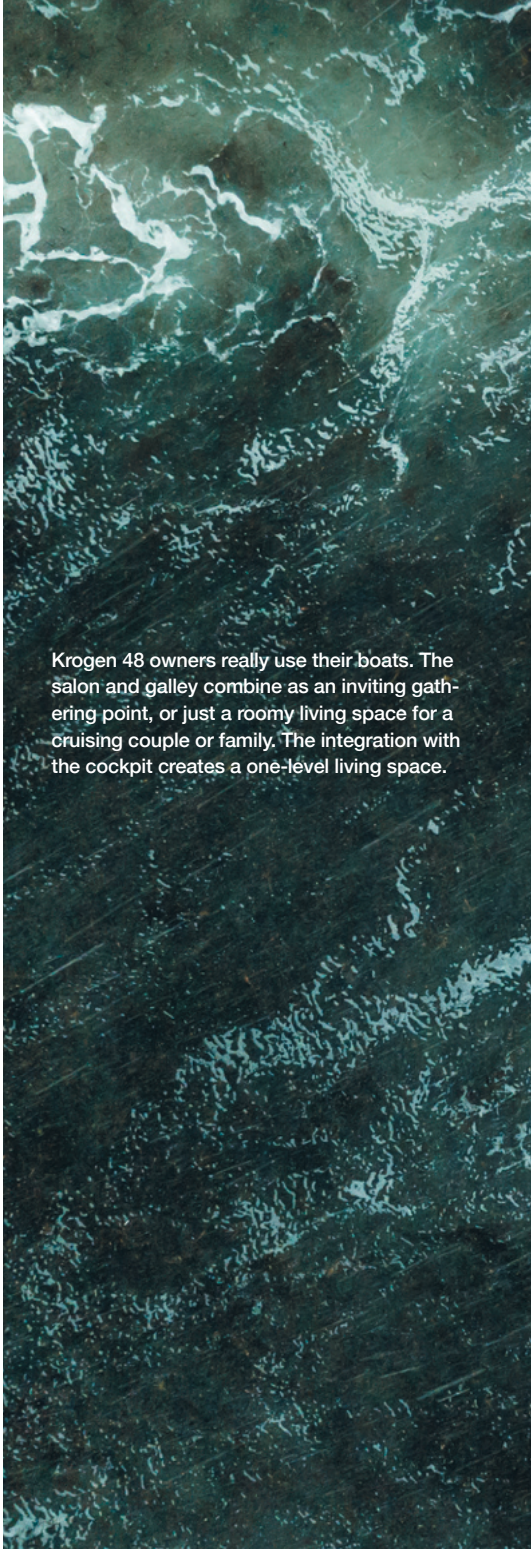
To starboard, the office area with desk and settee, can be converted into a stateroom with upper and lower berths.



The engine room on every Kroger is designed for access and easy routine maintenance. Note the soft patch over the engine for more extensive service.




The master stateroom is handcrafted with rich cherry and designed for long-term passagemaking comfort.



Krogen 48 owners really use their boats. The salon and galley combine as an inviting gathering point, or just a roomy living space for a cruising couple or family. The integration with the cockpit creates a one-level living space.





Outdoor living space abounds on the Krogen 48, with an expansive flybridge, large cockpit, and a forward settee.

The Krogen 48's flybridge helm is perfect for enjoying the fresh air and salty breeze while at anchor or underway.

## EXTERIOR FEATURES

Every Krogen Yacht is designed to maximize the amount of dedicated living space, inside and out. The flybridge provides a functional and comfortable perch for passagemaking, docking, or finding the best spot to drop the hook in a secluded anchorage. The large cockpit features a walkthrough door to the swim platform, and there are ocean-ready cleats conveniently located for all docking needs. Large safety rails and wide walkaround decks add to the seamanlike capabilities and long-range-cruisability.

The flybridge provides sufficient space for a large tender and davit, a must-have for any liveaboard cruiser.



# The Krogen 48 Specifications

**LOA:** 53' 0" (16.15 M)

**LOD:** 48' 6" (14.78 M)

**LWL:** 45' 5" (13.84 M)

**BEAM:** 17' 4" (5.28 M)

**DRAFT:** 5' 0" (1.52 M)

**DISPL.:** 56,450 LB. (25,605 KG)

**BALLAST (ENCAPSULATED LEAD):** 4,500 LBS. (2,041 KG)

**FUEL:** 1,000 GAL. (3,785 L)

**WATER:** 400 GAL. (1,514 L)

**APPROXIMATE BRIDGE CLEARANCE:**

W/ MAST UP: 29' 3" (8.92 M)

W/ MAST DOWN: 14' 7" (4.44 M)

**RANGE:**

6 KNOTS: 4,730 NAUTICAL MILES

7 KNOTS: 3,020 NAUTICAL MILES

8 KNOTS: 1,980 NAUTICAL MILES

9 KNOTS: 1,390 NAUTICAL MILES

\* Optional features and equipment may be shown on models throughout. Computer-generated images and rendered images used throughout are the designer's impression and are indicative of conceptual designs. The imagery used on may not represent actual design and construction or may be indicative of style only. Further the actual design / construction may vary from the one displayed in the information and material displayed throughout. Specifications subject to change without notice.



SCAN HERE TO SEE MORE ON THE KROGEN 48





## BRIDGE DECK

The flybridge features an optional summer kitchen with sink, refrigerator, and additional stowage beneath the L-shape settee.



## MAIN DECK

The salon features an L-shaped settee to starboard with storage below and a high/low table with fold-out top. The large, home-like galley has everything you need for meal prep onboard.



## ALTERNATE LAYOUT

An alternate layout configuration places a second stateroom to port with bunk beds, perfect for cruising with family and friends, and shifts the day head to starboard.

