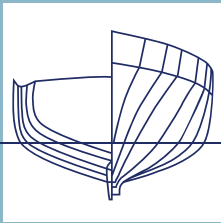


KROGEN  
YACHTS

AT HOME ON ANY SEA



Krogen 44 AE



# The Philosophy





## WELCOME TO KROGEN YACHTS, WHERE YOU'RE AT HOME ON ANY SEA.

At Krogen Yachts, we build extremely reliable, safe, and seaworthy yachts that provide our owners with the ideal platform for luxurious, trans-oceanic, bluewater cruising.

When you build with Krogen Yachts, you become part of a tradition for passagemaking excellence that dates back to 1976, when founders Art Kadey and Jim Krogen created a 42-footer that combined the proven seakeeping attributes of commercial ships with the onboard amenities and a level of livability fit for the recreational yachting market.

That first hull—with the onboard volume and seaworthiness to comfortably carry her owners across oceans—was the basis of our exclusive Pure Full Displacement hullform, that we still build on today.

Each of our models are designed around the same core philosophy—a Pure Full Displacement hull fitted out with an interior designed and built to exacting expectations.

We proudly offer customers a lineup of seven models ranging from 44 to 70 feet that allow our customers to live out their bluewater cruising dreams. Because one thing we've learned over our nearly 50 years of boatbuilding is that it's your adventures, your love of your boats, and the community that our owners have built that we're most proud of.

Welcome aboard.



KROGEN DELIVERS ON THE PROMISE OF  
BUILDING OCEAN-CROSSING YACHTS  
THAT ARE AT HOME ON ANY SEA.



## About the Krogen 44

The Krogen 44 is the ideal platform under 50 feet for those looking for a seaworthy, safe, and stable long-distance cruiser. Being easier to handle and maintain are qualities that every ocean trawler yacht should offer, but few actually deliver these attributes along with the comfort of home.

While many builders no longer offer yachts in this size range, Krogen Yachts strongly believes that focusing on the owner-operator niche delivers the ultimate passagemaker. In fact, with the introduction of the Krogen 42 in 1977, Art Kadey and Jim Krogen pioneered the full displacement passagemaker.

Today, the Krogen 44 is the perfect embodiment of this original concept, resulting in a superior sea boat and a proven transoceanic voyager. Like the 42, the Krogen 44 has a relatively light displacement-length ratio, a deep forefoot, a high-aspect keel, and end-to-end symmetry. And, thanks to her layout and advanced ergonomics, the Krogen 44 offers unparalleled liveaboard ease and comfort.

First and foremost, the trademark Krogen pilothouse not only offers an extremely functional area to navigate the Krogen 44 from, it also provides a second social area in addition to the saloon. This is key on long-distance cruises. The layout means the skipper can have morning coffee while checking emails from the pilothouse settee, away from breakfast prep in the galley three steps below. Watch mates also gain an additional sleeping area while on overnight passages.


Throughout the Krogen 44, a focus on natural ventilation and light creates an interior that can be equally appreciated on passage or on the hook. Liveaboard owners will appreciate how we maximize every usable inch of the interior for stowage. Furthermore, the Krogen 44 offers superior fuel efficiency, stalwart construction, and the advanced ergonomics that our customers have come to expect from Krogen Yachts.

When a company focuses on doing one thing extremely well for nearly 50 years, chances are it gets really good at it. That's the case with all Krogen models. Since day one, we set out to create the best bluewater cruiser in the world. In order to achieve these lofty expectations, we adhere to rigid design and engineering specifications, and ensure we constantly perfect and develop these standards. Every Krogen starts with the exclusive Pure Full Displacement hullform—a masterpiece design originally created by Jim Krogen. This form has ideal displacement-to-length ratios, a fine entry, and characteristic end-to-end symmetry. Where will your Krogen 44 take you?



The master stateroom benefits from natural airflow including four opening ports and a large opening hatch.






The dual-purpose den/guest stateroom allows for daytime use as a functional office area, or, combined with the day head, the entire area can function as a complete master suite.

## DESIGNED FOR ADVENTURE

From seamanlike touches like wide walkaround decks, thoughtfully placed cleats and handholds, and sturdy dogging doors, to the home-sized galley and appliances, spacious staterooms, and living room like seating, every Krogen is designed for onboard comfort at sea.

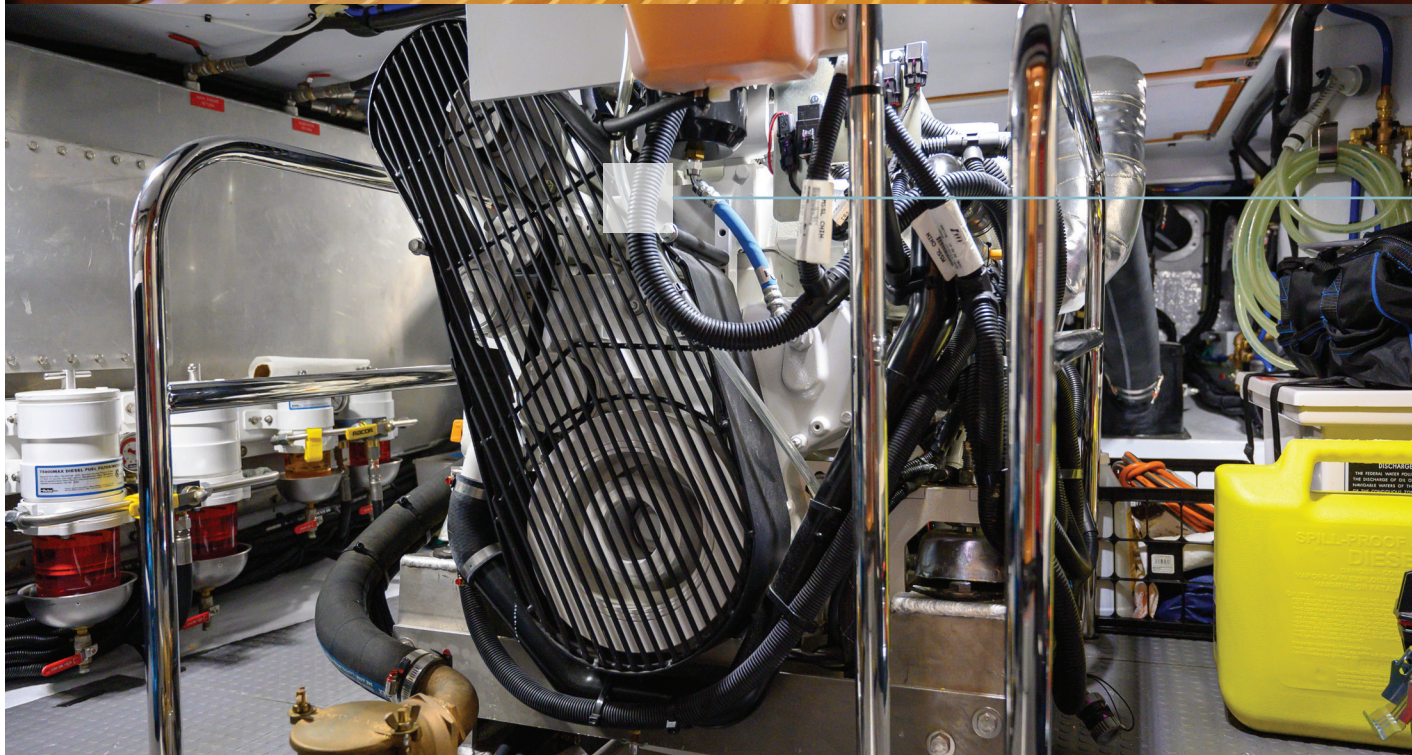


The Krogen 44's pilothouse is set up for long-range cruising. Note the areas for charts and handholds, and a helm designed for a full suite of electronics.





The optional washer/dryer combo delivers home-like amenities.




Owners will appreciate the ergonomics and functionality of the Krogen 44's engine room.





The galley incorporates household-sized appliances and enough room for two people to prep and serve meals.





Whether you're a weekend warrior or a liveboard voyager, you'll appreciate the intelligent use of space and homelike features. The galley's full-size appliances and plentiful counterspace will make any cook feel right at home. Thoughtful touches, like fiddles, round corners, and flawless joinery are key to a long-distance cruiser such as the Kroger 44.



The Krogen 44 sports a salty, seaworthy profile that pays homage to her ocean-worthy, long-range cruising DNA.





The large cockpit is perfect for alfresco meals and easy access to the water.

## EXTERIOR FEATURES

Every Krogen is designed to maximize the amount of dedicated living space, inside and out. The flybridge provides a functional and comfortable perch for passagemaking, docking, or finding the best spot to drop the hook in a secluded anchorage. The large cockpit features a walkthrough door to the swim platform, and there are cleats conveniently located for all docking needs. Large safety rails and wide walkaround decks add to the seamanlike capabilities and long-range-cruisability.

The flybridge is designed for passagemaking comfort, with access to all needed controls and systems information.





# The Krogen 44 Specifications

**LOA:** 49' 0" (14.93 M)

**LOD:** 44' 4" (13.41 M)

**BEAM:** 16' 4" (4.97 M)

**DRAFT:** 4' 6" (1.37 M)

**DISPL.:** 43,140 LB. (19,567 KG)

**BALLAST (ENCAPSULATED LEAD):** 2,500 LB. (1,133 KG)

**FUEL:** 850 GAL. (3,217 L)

**WATER:** 300 GAL. (1,135 L)

**APPROX. BRIDGE CLEARANCE:**

WITH MAST UP: 23' 3" (7.08 M)

WITH MAST DOWN: 13' 8" (4.16 M)

**RANGE:**

6 KNOTS: 4,450 NAUTICAL MILES

7 KNOTS: 3,000 NAUTICAL MILES

8 KNOTS: 1,900 NAUTICAL MILES

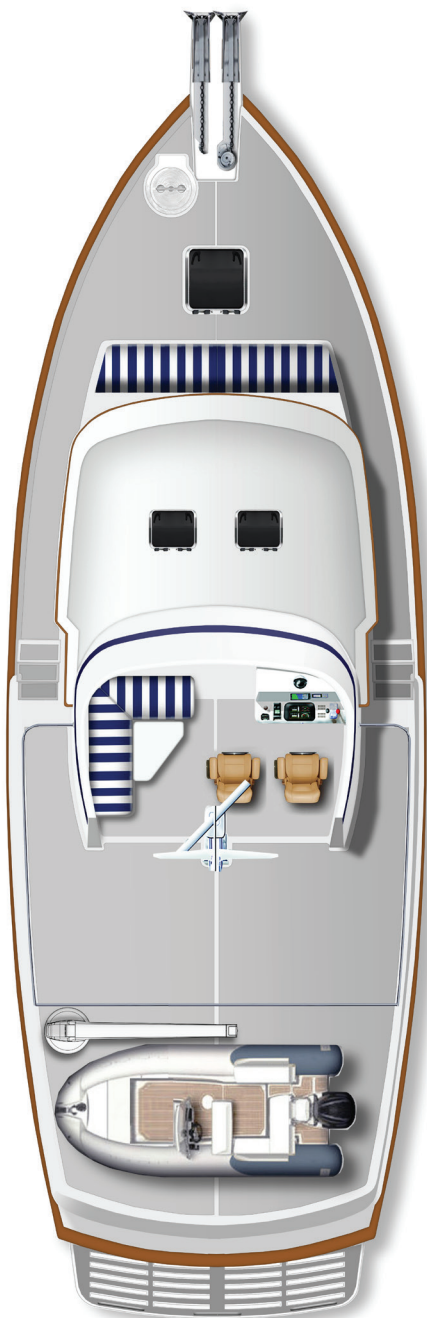
9 KNOTS: 1,250 NAUTICAL MILES

(CALCULATED WITH A 10% RESERVE. RANGES ARE APPROXIMATE.)

\* Optional features and equipment may be shown on models throughout. Computer-generated images and rendered images used throughout are the designer's impression and are indicative of conceptual designs. The imagery used on may not represent actual design and construction or may be indicative of style only. Further the actual design / construction may vary from the one displayed in the information and material displayed throughout. Specifications subject to change without notice.



SCAN HERE TO SEE MORE ON THE KROGEN 44



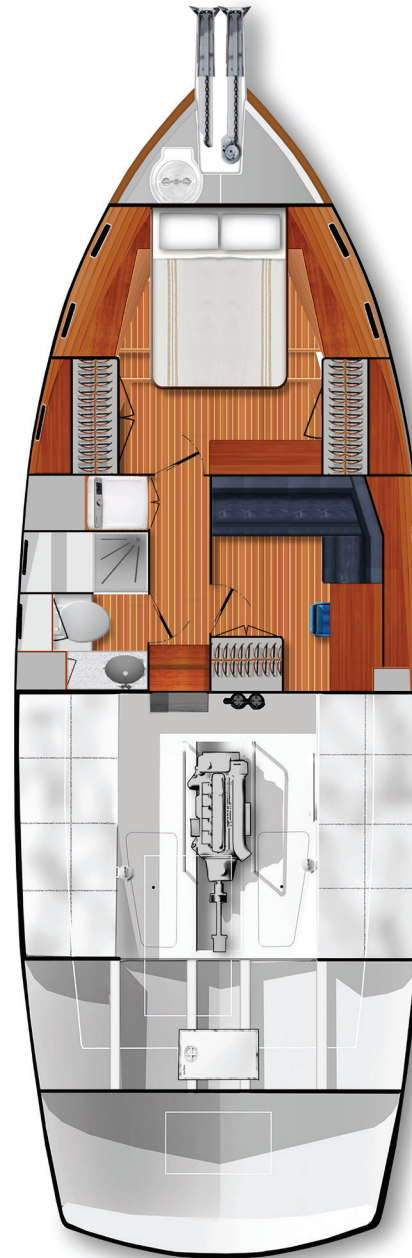
## BRIDGE DECK

The bridge deck can accommodate a tender up to 12.5 feet in length, there is room for two helm chairs at flybridge helm station, and stowage beneath the L-shaped settee to port.



## MAIN DECK

The main living space is divided for comfort with a galley convenient to both the saloon area and the pilothouse. Plentiful seating and natural light abounds.



## LOWER DECK

The owner's stateroom features his-and-hers hanging closets, a centerline queen berth with drawers and stowage underneath, and easy access to the large head.



