



AT HOME ON ANY SEA™



Kadey Krogen 39 Pilothouse

Make:	Kadey Krogen	Hull Material:	Fiberglass
Model:	39 Pilothouse	Number of Engines:	1
Length:	39 ft	Fuel Type:	Diesel
Price:	\$ 375,000	Number:	6167217
Year:	2006		
Condition:	Used		
Location:	Everett, WA, United States		

Description

Latest Model, Stabilized & Very Clean

Pacific Dancer is the newest 39 of the Kadey-Krogen fleet on the West Coast, and is in fantastic condition. This is a truly rare opportunity to purchase a world-cruising capable trawler yacht, with all the right equipment, that is priced right by a motivated seller.

Kadey-Krogen Yachts

610 NW Dixie Highway, Stuart, FL 34994, United States

Tel: 800-247-1230 yourcrew@kadeykrogen.com

<http://www.yachtworld.com/krogenyachtsales>

If distant horizons are on your itinerary you will definitely want to put Pacific Dancer on your short list. She is already in very clean condition, but will be fully detailed as soon as the weather allows, and is being hauled for bottom paint and service before the sale. So bring your provisions and begin your own adventure this summer.

Measurements

LOA:	43 ft 8 in	Ballast:	2000 lb
LWL:	36 ft 8 in	Displacement:	33470 lb
Length on Deck:	38 ft 11 in	Displacement Type:	Half Load
Beam:	14 ft 9 in	Windlass:	Electric Windlass
Min. Draft:	4 ft 3 in	Electrical Circuit:	110V
		Liferaft Capacity:	4
		Fuel Tanks #:	2
		Fuel Tanks Capacity:	700 gal
		Fuel Tanks Material:	Aluminum
		Fresh Water Tanks Capacity:	300 gal
		Holding Tank Capacity:	35 gal
		Number of double berths:	3

Propulsion

Engine #1

Engine Make:	John Deere	Engine Year:	2006
Engine Model:	4045	Hours:	2155
Primary Engines:	Inboard	Power:	135 hp
Drive Type:	Direct Drive	Propeller Type:	3 Blade

Construction

Hull and superstructure molds are from high-grade female tooling. Hull construction includes use of USA-made, Cook Gel Coat. Hand-laid Knytex fiberglass construction with closed-cell PVC sandwich core used in topsides. Solid fiberglass below waterline with blister-resistant Vinylester resin utilized on first two laminates below the waterline with **Aramid fiber reinforcements** (similar to Kevlar). Superstructure includes end-grain balsa core and Knytex surface mats for print-through reduction.

Teak glued-down aft and side decks. Boat and fore decks have GripTex non-skid finish. Bulwark has molded plank lines with gelcoat finish. Polyurethane formulated marine sealants used at

hull-to-deck, boat deck joints and exterior fittings. Marine-grade plywood bulkheads with molded fiberglass hat section stringers. Teak veneer walls and cabinetry with satin varnish.

Layout

Stepping aboard a Kadey-Krogen is unlike most boats. You immediately enjoy a fully covered cockpit with beautiful teak decking. Called the Back Porch by most owners, this is the perfect arrangement for Northwest weather. The Krogen 39 offers access to the foredeck area from both port and starboard sides.

Entering the saloon you pass through a fully-welded aluminum storm-proof door. Dinette to starboard with a teak hi-low table, settee to port that extends to make into a double berth. The entire saloon is carpeted with a custom-fitted wool carpet that even has a SoundDown lead-impregnated carpet pad for extra sound deadening. Forward to starboard is the galley with abundant storage, ideally suited for long range voyaging. The galley includes a gas range and separate refrigerator/freezer. Opposite the galley is a storage area with bookshelf above. Up three steps to the pilothouse where all the action happens. This area includes a comfortable settee that converts to a double berth.

Down the stairs to the island master stateroom and head with separate stall shower. Under the custom queen berth is a huge storage locker, with gas struts to make accessing this area a simple task. There is a dresser and two large hanging lockers too. Opposite the stateroom is the stand-up engine room, which is accessed through an insulated door in the alcove of the staircase. In the engine room, there is more than 6' of head room, a work bench and storage lockers. There is also a floor hatch on gas struts for accessing the engine room from the saloon area, and three large hatches that can be removed to provide unobstructed access to the entire machinery space.

Virtual Tour

For best results: View with the Chrome Browser; Once an image is open, click on the circle-round icon in the upper-right corner, then drag your cursor around the image to move it.

Virtual Tour Images:

Saloon: <http://bit.ly/PDSaloon>

Pilothouse: <http://bit.ly/PDPilothouse>

Forward Passageway: <http://bit.ly/PDPassageway>

Engine Room: <http://bit.ly/PDEngine>

Aft Engine Room: <http://bit.ly/PDEngineAft>

Stateroom: <http://bit.ly/PDStateroom>

Electronics

- Raymarine E120 system - Radar - Plotter - Sounder - AIS
- Raymarine Autopilot with wireless remote controller
- Data port for Raymarine in pilothouse
- Standard Horizon GX2150 VHF with AIS tied to MFD above
- 2nd Standard Horizon VHF in pilothouse
- 3- Standard Horizon Remote Command mics on board for the VHF Radios
- Loud hailer

- Full instrumentation and controls on fly bridge. Includes Raymarine E80 MFD with radar, auto pilot (remote), engine gauges, bow thruster & stabilizer control, and VHF radio

- Kenwood CD / DVD Satellite Radio Receiver with Pioneer 4-channel power amplifier, and 4 Definitive Pro Monitor 800 speakers (new in 2011)

- ACR Global Fix iPRO EPIRB (new in 2011)

- 12 volt outlets throughout

Electrical

- Northern Lights 6 Kw generator w/728 hrs.
- Shore power inlets at bow and cockpit locations
- 2- Phase Three PT24-40 - 3-Phase Smart Chargers
- 3- House 8D batteries
- Generator starting battery
- Engine starting battery
- 2- 8D Bow Thruster batteries
- Separate battery system for boom winch

Mechanical Equipment

- ABT TRAC digital active fin stabilizer system
- ABT 24-volt Bow thruster
- Trolling valve
- Hurricane Hydraunic Diesel/Electric Heating System (new in 2011)
- Electric boom winch/hoist system

- Dual Racor filters for main engine
- Fuel transfer system
- Holding tank monitor
- 4- Bilge electric bilge pumps
- Freshwater washing supply at bow, cockpit & engine room
- Deck lights, courtesy lighting
- Hydraulic engine/gear controls
- Cockpit hot & cold shower
- Swim platform with large walk-thru cockpit door
- Shore water inlet
- Delta plow anchor with chain rode
- Maxwell vertical anchor windlass

Tender & Life Raft

- Avon fiberglass RIB Tender with 15hp Yamaha 4-stroke outboard motor on stainless-steel deck cradle.
- Viking Model 4UKL 4-man Life Raft (new in 2012) - Not currently certified.

Fishing Gear

- Trolling Valve
- 2- Custom removable downrigger brackets on transom with Scotty electric downriggers.
- Electric shrimp pot puller
- Custom, fully-concealable electrical system for downriggers & shrimp pot puller with foot-switch.

Exclusions

Personal gear and effects.

Disclaimer

The Company offers the details of this vessel in good faith but cannot guarantee or warrant the accuracy of this information nor warrant the condition of the vessel. A buyer should instruct his agents, or his surveyors, to investigate such details as the buyer desires validated. This vessel is offered subject to prior sale, price change, or withdrawal without notice.

Photos



Pacific Dancer on the Hook



Saloon Forward



Galley



Pilothouse



Helm Control 2



Breaker Panel



Pilothouse 2



Stateroom 1



Stateroom Port



Stateroom Starboard



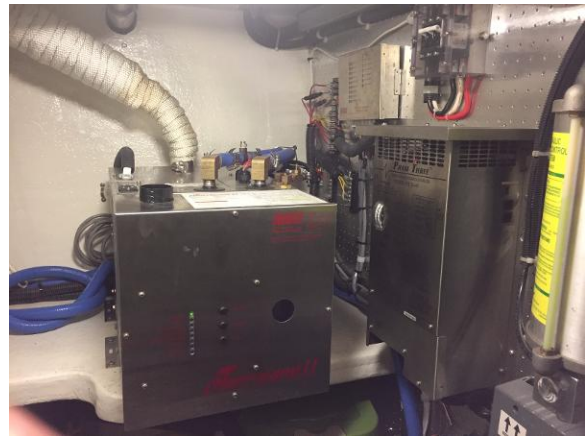
Full Head



John Deere 4045



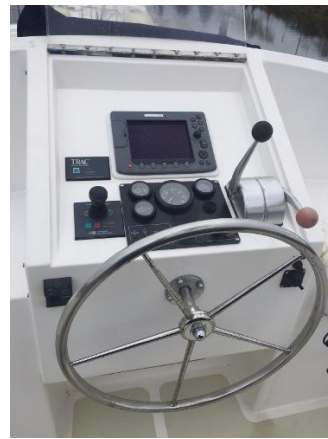
Engine Room Workbench



Hurricane Heat



Engine Room 2



Flybridge Helm



Boat Deck



Saloon Aft



Pacific Dancer at Smith Inlet