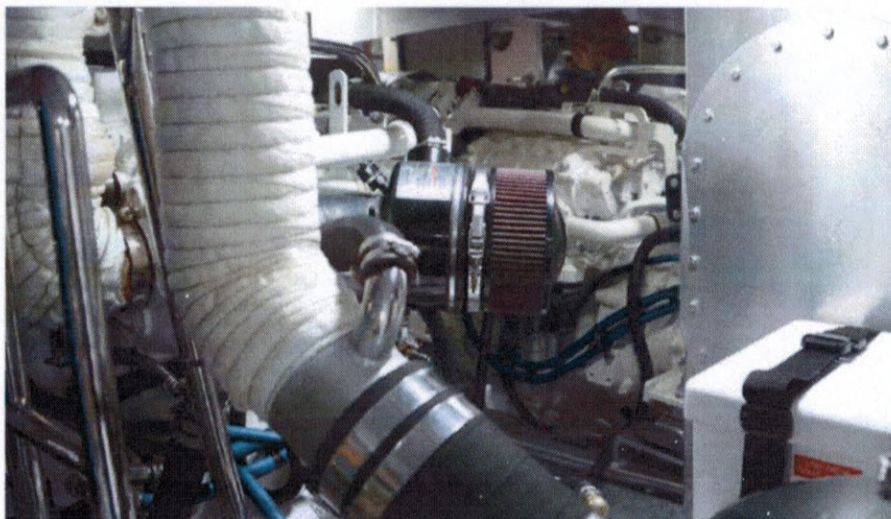


The Right Stuff

BY STEVE ZIMMERMAN

Equipping your cruiser with the right stuff doesn't have to be complicated or expensive. The owner of this Krogen 52 asked the builder to install mirrors made of polished stainless steel on the fuel tanks in the vessel's engine room. Doing so provides a simple and effective way to keep an eye on the outboard sides of both John Deere engines. Maybe it's not a new idea, but it's still a good one. Twin engines (yes, this Krogen has two) often present maintenance and access challenges. The combination of white paint and large mirrors will enable the owner to see problems, should they develop.

Additionally, the battery box in the lower-right is well secured and clearly labelled. Just outboard of the battery box you will find a fuel tank inspection port large enough to provide excellent access in case the tank needs cleaning. There is a Walker AirSep



in the center that contains crankcase emissions and the vacuum it creates will reduce the likelihood of any seal leaks. Simple, clean, the right stuff. ■

Steve Zimmerman

PRODUCTS & SERVICES

ZENO MATTRESS

"MARINE BEDDING
SPECIALISTS SINCE 1954"



Custom made innerspring mattresses to fit any size or shape. Full line of innerspring, pillow tops and latex rubber.

• WE SHIP •

1-888-275-7879 • 954-764-1212
101 NW 6th Street
Fort Lauderdale, FL 33311

www.zenomattress.com

106 passagemaker.com January/February 2016

SWITLIK
SURVIVAL PRODUCTS



Even on sunny days,
accidents happen.
Are you prepared?



When all else fails, you can depend on SWITLIK

Professional Survival Equipment for Serious Mariners.
Family Owned & American Made Since 1920.



Call 609-587-3300 today for more information or visit:

www.SWITLIK.com

40+ Dealers
Coast to Coast!