



AT HOME ON ANY SEA™



Grand Banks 54 Heritage EU – Sedulous

Make:	Grand Banks	Boat Name:	Sedulous
Model:	54 Heritage EU	Hull Material:	Fiberglass
Length:	54 ft	Draft:	5 ft
Price:	\$ 1,949,000	Number of Engines:	2
Year:	2014	Fuel Type:	Diesel
Condition:	Used	Number:	5948394
Location:	Portsmouth, RI, United States		

Sedulous

Only Grand Banks 54 EU on the market today. Seller is upgrading to larger boat. 2014 with low hours. Boat is fully loaded from top to bottom including Naiad Stabilizers, cockpit docking station, bow and stern thrusters, full Garmin Electronics, KVH Satellite TV System, fresh bottom paint, hull wax and varnish. Boat is immaculate and ready for new home. Low hours and ready to go immediately.

Kadey-Krogen Yachts

610 NW Dixie Highway, Stuart, FL 34994, United States

Tel: 800-247-1230 yourcrew@kadeykrogen.com

<http://www.yachtworld.com/krogenyachtsales>

Measurements

Cruising Speed:	18 mph	Fuel Tanks Capacity:	1500 gal
Max Speed:	25 mph		
LOA:	54 ft 4 in	Fresh Water Tanks Capacity:	300 gal
LWL:	49 ft 1 in		
Beam:	17 ft 9 in	Holding Tank Capacity:	100 gal
Max Draft:	5 ft		
Dry Weight:	83335 lb	Number of single berths:	2
		Number of double berths:	2
		Number of Cabins:	3
		Number of Heads:	2

Propulsion

Engine #1

Engine Make:	MTU	Hours:	690
Engine Model:	S-60	Power:	825 hp
Primary Engines:	Inboard	Propeller Type:	4 Blade
Drive Type:	V Drive	Rope Cutter:	Yes
Location:	Port		

Engine #2

Engine Make:	MTU	Hours:	690
Engine Model:	S60	Power:	825 hp
Primary Engines:	Inboard	Propeller Type:	4 Blade
Drive Type:	V Drive	Rope Cutter:	Yes
Location:	Starboard		

Features

Electronics

- Depthsounder
- Log-Speedometer
- Repeater(s)
- Radar
- Wind Speed and Direction
- TV Set

- Navigation Center
- DVD Player
- Radio
- CD Player
- Cockpit Speakers
- Plotter
- Autopilot
- Compass
- GPS
- VHF

Inside Equipment

- Stern Thruster
- Bow Thruster
- Electric Bilge Pump
- Manual Bilge Pump
- Marine Head
- Electric Head
- Hot Water
- Deep Freezer
- Battery Charger
- Dishwasher
- Washing Machine
- Oven
- Microwave Oven
- Air Conditioning
- Heating
- Refrigerator
- Sea Water Pump

Electrical Equipment

- Shore Power Inlet
- Inverter
- Generator

Outside Equipment/Extras

- Teak Cockpit
- Teak Sidedecks
- Cockpit Cushions
- Swimming Ladder
- Cockpit Shower
- Tender
- Cockpit Table

Covers

- Bimini Top
- Cockpit Cover

Vessel Walk Through

Upon entering from the swim platform you will ease up three molded in stairs to the fully covered cockpit. In the cockpit you will find a full settee with cushions and sunbrella cover along with a table large enough to dine eight. The cockpit soul is covered with the teak decking system. On the port side of the house top there is the fly bridge access via a molded in stair case, the hatch closes to keep the cockpit dry when raining. On the starboard side of the house top there is a storage compartment which houses a sink and the aft docking stations.

Both side decks provide ample room for getting around the boat or setting up lines and fenders. At midships on both side there are access gates for boarding. Going to the foredeck there are two enormous storage lockers in the trunk of the boat. Also forward you will find a large U-shaped settee with a hi-low table, cushions and covers also provided. A great spot to catch a sunset or afternoon nap.

On the bow you have an anchor roller capable of handling twin anchors along with an electric windlass.

Up on the fly bridge you will find the second nav station with two Stidd helm chairs and a large electronics console. A bench and fwd facing seat to port and to stb you will see a large L-Shaped settee and large dining table. The bridge also has ample storage, a BBQ Grill, refrigerator and wet bar. The aft section of the bridge houses a large tender along with a 1000 lbs steelhead dingy davit. Safety rails encompass the entire deck.

Entering inside the boat you walk through a large sliding door that also house two phantom screens. Her 17'9" beams gives her the feeling of a much larger yacht. Once inside you are in a very expansive salon with a pop up TV to stb. Bose entertainment center with Ice maker below are located in the aft port corner. To stb, you have a large L- settee facing the TV with a nice teak coffee table. To port, directly in from the tv is another large settee. Again, tons of storage in the end table and under the settee's.

Moving forward you take one step up into the expansive galley/dinette and pilothouse. To the stb side you have a large u-shaped galley with draw dishwasher, 4 subzero fridge/freezer drawer units, convection microwave, storage for all flatware, silverware and cooking needs as well as a great "Magic Corner" storage system for dry goods. Directly opposite of the galley you have a dinette large enough to seat 6 comfortably.

Forward of the galley/dinette is command central starting with a single stidd helm chair and full nav station with full garmin touch screen electronics package. 360 degree view from this station. When docked, the hunter douglass shades do a great job of providing privacy. This boat has pilot house doors on both the port and starboard side which allow for easy access to the side decks when docking.

You access the lower deck accommodations to stb of the nav station via a very wide curved stair case. Half way down you will find your electrical panel. This location is great because you are seeing everything at eye level. Once on the lower level as you move fwd to port you will find the third cabin with upper and lower bunks. While not enormous, if you have extra people or kids on board this cabin is ample for two people with storage. All the way forward you will find the VIP stateroom with the an island queen and ample storage and ventilation. The second head is aft and starboard of the VIP stateroom. This head has direct access to the VIP as well as the companionway. In the head you have a separate shower, sink, vacu flush head and vanity.

Coming aft you take one step down to the full beam master cabin. The queen berth sits athwartships to port. Large fixed and open windows provide a bright and airy atmosphere. On the starboard wall outside the head there is a mounted flat screen tv. Both sides of the bed have built in night stands, drawers are located beneath the bed, bureau is on the aft bulkhead located next to two large hanging lockers.

The master head has an enormous shower, large window and a ton of counter space with a pop up vanity mirror.

Aft of the master you access the utility room which is made possible due the V-drive engine configuration. In the utility room you have a secondary electrical panel, fridge and freezer, fully vented washer and dryer and a lot more storage areas.

Entering the engine room you have stand up head room. The main attraction are the twin MTU ST60 825 HP diesel engines. These are a significant upgrade over the std Cummins or Volvo engines. Easy access to the the mains, genset, glenndenning cable master the other systems located in the engine room. Very nice shelving system on transom bulkhead which can easily house a tool box, spares, toys, etc. In addition to the access through the utility room you have a large hatch that you can enter through the cockpit.

Construction

- Bootstripe: "Jet Black" Awlgrip #G2017
- Fiberglass outer skin: gel-coated, Cook Composites & Polymers
- Fiberglass: hand-laid
- Hull barrier: epoxy undercoat, Z-Spar, 2 coats
- Hull lamination: Hydrex resin skin coat, Reichold
- Hull structural grid: fiberglass and foam
- Hull: solid fiberglass below and cored above waterline, with cross-linked PVC foam core
- Keel: full length extending below running gear
- Quarter guard: FRP molded, with stainless steel rubrail
- Structural bulkheads: composite, partially watertight (3)

Exterior

- Foredeck table: varnished teak table with cover
- Canvas Package: Exterior canvas covers for FB helm, helmseats, settees, table, wet bar and fwd main deck table; color "Toast"
- Window Covers: Textaline style for windshield, salon port and stbd windows, salon aft door, and salon aft stbd windows; color "White"
- Sunbrella: Fabric upgrade for bridge cushions and aft deck cushions
- Bimini: Custom Barrett enclosures fixed bimini top with welded stainless steel supports
- Crane: Airtex davit
- Windlass: Muir HR3500C horizontal windlass with gypsy size 3/8" HT
- Anchor chain locker: with partition for rope and chain, self-draining
- Anchor platform: fiberglass pulpit, double stainless steel rollers for two (2) anchors
- Anodes: zinc; hull, shaft and trim tabs
- Cap rail: varnished teak
- Cleats: for mooring, stainless steel, fixed
- Courtesy lights: LED, Hella Marine
- Deck fills: fuel, water and waste pumpout; at side decks
- Decking: side and forward decks, painted non-skid, Awlgrip; color "Moondust"
- Exterior lockers & settees matting: 3M 9100T Entrap, Z-web vinyl ridges; color "grey"
- Flag poles: varnished teak, with stainless steel holders at bow and stern
- Foredeck lockers: port and starboard

- Foredeck settee: U-shaped "dinette", molded fiberglass with cushions, table, storage lockers
- Freshwater washdown: with quick disconnect outlet, at bow, including one hose
- Grab rails: stainless steel
- Navigation light boards: varnished teak, port and starboard
- Rail gates: stainless steel, port and starboard
- Rubrail: heavy-duty vinyl, stainless steel insert profile
- Safety rails: at flybridge, 1" 1/8 diameter round profile stainless steel, with intermediate rail, on flybridge deck perimeter
- Safety rails: at main deck and flybridge, 1 1/8" diameter round profile stainless steel, with intermediate rail
- Skylight hatches: Manship, stainless steel
- Swim ladder: stainless steel, collapsible/sectional, mounted under swim platform
- Swim platform: teak
- Utility room vents: natural ventilation, port and starboard
- Windows: at hull sides, grey tempered glass, fixed, fritted, bonded in place
- Windows: grey tempered glass at salon sides, clear tempered glass at salon front, fritted, bonded in place

Flybridge

- Helm Seat: Additional Stidd 500NXL-3x2 series helm seat at stbd of FB
- BBQ Grill: GalleyMate 2000 propane grill with full grill surface BBQ at aft stbd locker
- Wet Bar: Bar cabinet at flybridge stbd aft with refrigerator (Coolmatic #CR49) and sink/faucet
- Compass: flush mounted on top of electronics console, Ritchie
- Courtesy lights: LED, Hella Marine
- Davit: Steelhead ES1000 electro-hydraulic, four movements (luffing, boom extension, rotation, winch), 450kg (1000 lbs) lifting capacity
- Deck hatch: sliding, for access from cockpit to Flybridge
- Decking: painted non-skid, Awlgrip; color "Moondust"
- Dinghy chocks: stainless steel structures with teak pads, positioned athwartship; 340kg (750 lbs) recommended dinghy weight
- Electronics console: molded fiberglass with high gloss teak visor
- Helmseat: Stidd Admiral Low Back, with deluxe chrome package and cupholder
- Locker: storage under steering console
- Radar arch: molded fiberglass, with antenna(s) platform
- Settees: (I) starboard L-shaped and port straight, molded fiberglass, underseat storage, (II) cushions, self-piping, vinyl SoftDura "Off White"
- Steering wheel: stainless steel, teak rimmed
- Storage lockers: lift top, molded fiberglass, port and starboard of electronics console
- Table: stainless steel pedestal, varnished fixed teak flat top
- Wet bar: fiberglass molded, portside aft, integrated sink, cold water faucet
- Windshield: tinted Perspex with stainless steel mounting brackets and upper rail

Aft Deck - Cockpit

- Teak Decking at cockpit
- Freshwater Washdown: and outlet at cockpit
- Docking Station: Integrated into the cockpit cabinet. Includes engine controls Twin Disc EC300, and bow and stern thruster controls

- Full Cockpit Dodger
- Aft door screen: (2) units center joint retractable Phantom screen for aft door
- Decking: solid teak, epoxy bonded, TDS System
- Engine room access: pneumatic deck hatch, aluminum ladder
- Flybridge access: molded fiberglass integral straight staircase, storage within, with teak treads and dual, stainless steel hand rails
- Self-draining cockpit: stainless steel drains, one each port and starboard
- Settee: (I) forward-facing at transom, straight, molded fiberglass, underseat storage, (II) cushions, self-piping, vinyl SoftDura "Off White"
- Shower: hand-held, in cockpit, with retractable hose, hot/cold, Scanvik
- Table: stainless steel pedestals, varnished teak flat top
- Transom access: port access stairs to cockpit, integrated steps
- Transom door: hinged, opening outwards, solid fiberglass, teak-clad, fiberglass transom door, with magnetic locking device
- Transom: horizontal solid teak planking, varnished
- Wet bar: with integrated sink, cold water faucet

Interior

- Galley and Head Countertops: Ceasearstone; color "Ocean Foam"
- Sole: Teak strip throughout, including Utility Room
- 54EU Layout - standard (S01/F01): (I) salon w/L-settee to port, straight settee to starboard - (II) galley to starboard, dinette to port - (III) three cabins, midship Master cabin w/en-suite head, two Guest cabins w/one head - (IV) utility room
- Bulkheads: (I) teak veneer, (II) Formica
- Cabin doors: teak, with raised panels, polished chrome lock sets
- Cabinet furniture: teak faced
- Cabinet furniture: teak, raised panels
- Dimmer switches: in salon and cabins, Vimar, bronze covers
- Drawers: teak faced with positive locks
- Grab rails: teak bars, stainless steel fittings
- Hardware: stainless steel and chrome
- Headlining: vinyl panels, removable with Fast Mount System
- Hull ceiling sides: vinyl
- Indirect overhead lighting: Cantalupi
- Interior varnish: satin marine finish, six coats, International Goldspar Satin Varnish
- Lighting: Xenon, DC, Cantalupi
- Lights: reading lights at berths
- Portlights: lower deck, opening, with screens, Aritex
- Sole - lower deck: custom teak planking in cabins, heads and companionway
- Steps anti-slip: custom rubber traction strips
- Window treatments - lower deck: roman shades
- Window treatments - upper deck: (I) side windows and side door(s) - Hunter Douglas Duette Shades
- Window treatments - upper deck: fabric curtains

Salon

- L-Settee: Custom L-settee & straight settee at salon with vertical face in teak finish, with drawer storage
- Bar cabinet: teak, with bottle and accessory storage
- Doors - aft deckhouse: sliding, stainless steel frame, Aritex
- Entertainment center: teak cabinetry
- Settee to port: L-shaped, under-seat storage drawers
- Settee to starboard: straight, under-seat storage drawers
- Table: teak, low profile, fixed foot, flat top with pattern and maple inlay
- TV cabinet: powered Manship pop-up TV lift
- Windows: opening, with screens, port & starboard

Galley and Dinette

Galley

- Dishwasher: Fisher Paykel dishwasher #DD24STi6V2
- Galley Equipment: Miele cooktop (CS1234-1); Sharp microwave oven (#R930CS); Vitrifrigo refrigerator and freezer
- Overhead Dish Locker: Extended galley overhead drop down dish locker at galley outboard
- Cooktop: AC, four electric burners, Miele KM
- Countertop: Ceaserstone; color "Ocean Foam"
- Dinette: L-shaped settee, teak table, flat top with pattern and maple inlay, fixed stainless steel pedestal
- Exhaust blower: DC, 3" diameter, Jabsco 35115-0020
- Faucet: Grohe, single lever, pull-out head with hose
- Galleyware - dishware: bone china (includes dinner plates, salad plates, bowls, coffee mugs), and serving platter(s)
- Galleyware - flatware: (includes dinner forks, salad forks, soup spoons, teaspoons, knives), and serving piece(s)
- Galleyware - glasses: (includes highballs, tumblers, red wine glasses, white wine glasses)
- Garbage bin: stainless steel double bin, under sink, Hafele
- Lockers: teak, storage
- Oven: microwave/convection oven, 110/120V, 60HZ, Sharp R930CS
- Refrigerator/freezer: one drawer unit each, 110/120V, 60Hz, Sub-Zero 700BC
- Refrigerator: two drawers, 110/120V, 60HZ, Sub-Zero 700BR
- Sink: single bowl, stainless steel, Franke

Dinette

- Retractable Screen: Retractable Phantom door screens for port and stbd salon doors
- Dinette Settee: Custom designed L-settee at dinette area with vertical face in teak finish
- Aft end of Dinette Settee with basket drawer, opening facing inboard; Fwd end with basket drawer, opening facing fwd; rest of settee compartments with normal drawers

Lower Helm Station

- Chart locker: teak, on port side or helm station
- Compass: flush mounted on top of electronics console, Ritchie
- Doors: port and starboard, Aluminum painted, interior teak inlay, with stainless steel frame, Aritex
- Electronics console: wrapped with Ultraleather, with teak instrument panel
- Electronics overhead console: teak, with removable panels
- Helmseat: Stidd Admiral Low Back, with deluxe chrome package and cupholder
- Steering wheel: stainless steel, teak rimmed

Electronics

- Garmin 2 x 8215 Latest Generation Color Touch Screen Multi-Function Chart Plotter for Lower Helm
- Garmin 2 x 8215 Touch Screen Multi-Function Chart Plotter for Upper Helm
- Garmin 4kW, 72 Nautical Mile 4' Open Array High Definition Radar
- Garmin GSD24 Sonar Module with Bronze Through Hull transducer
- Garmin 2 x NMEA 2000 GPS WAAS antenna
- Garmin NMEA 2000 Backbone and Cabling as required for proper NMEA2000 Network
- Garmin XM Satellite Weather system
- 2 x Garmin GMi20 Color Digital Display with Smart thru hull transducer package as required for lower helm & bridge
- Garmin GHP12 High Performance Inboard Automatic Pilot System with GHC20 controls for lower helm & bridge
- Rudder Feedback system as required for Rudder angle indications on automatic pilot
- 2 x Icom M506 VHF Radio with DSC Capabilities
- 2 x High Gloss 8' VHF Antenna packages with stainless steel mounts
- Vision Smart Chart card for Southeast Florida and the Bahamas
- KVH TV5 Satellite TV with dummy dome on opposite side
- Satellite Dome Mounting pedestal and or shim kit as required
- Satellite Antenna control unit installation for salon as required
- 2 x DirecTV USA Satellite receiver
- 2 x RF remote control for DirecTV satellite receiver
- RF cabling to accessible TV locations as required
- Interface satellite receiver with Salon stereo system

Master Stateroom

- Berth: Island oversized queen, with under berth storage drawers
- Cabinets: storage throughout
- Hanging lockers: teak, two (2) units, cedar-lined, w/Aqua Signal interior lights
- Head and shower access: private en-suite
- Mattress: Innerspring, pillow top with memory foam
- Night tables: teak, each side of berth
- Port-holes: stainless steel, opening, smoked glass, with screens
- Reading lights: two (2), DC, chrome finish
- Utility room and engine room access: direct

Master Head

- Cabinets: under-counter storage
- Countertop: Ceaserstone; color "Ocean Foam"
- Exhaust blower: DC, 3" diameter, Jabsco 35115-0020
- Port-hole: stainless steel, opening, smoked glass, with screen
- Shower drain: automatic drain pump, DC, Whale
- Shower faucet: Grohe, mixer, hand-held
- Shower stall: separate fiberglass cell, frameless glass door, Corian pan
- Sink faucet: Grohe, single lever
- Sink: single under-mount, Corian
- Skylight hatch: Manship, smoked, with Oceanair screen and shade
- Toilet: Tecma Silence Plus, freshwater flush through macerator
- Vanity: above-counter storage, cosmetic mirror

FWD VIP Guest Stateroom

- Lift-up Storage under berth
- Berth: Island queen, with underberth storage drawers
- Hanging lockers: teak, two (2) units, cedar-lined, w/Aqua Signal interior lights
- Head access: en-suite
- Mattress: Inner spring, pillow top with memory foam
- Reading lights: two (2), DC, LED, chrome finish
- Skylight hatch: Manship, smoked, with Oceanair screen and shade

Guest Stateroom

- Berths: upper and lower
- Hanging locker: teak, cedar-lined, Aqua Signal interior light
- Mattresses: Innerspring, pillow top with memory foam
- Storage: under lower berth

Guest Head

- Cabinets: under-counter storage
- Countertop: Ceaserstone; color "Ocean Foam"
- Exhaust blower: DC, 3" diameter, Jabsco 35115-0020

- Shower drain: automatic drain pump, DC, Whale
- Shower faucet: Grohe, mixer, hand-held
- Shower stall: separate fiberglass cell, frameless glass door, Corian pan
- Sink faucet: Grohe, single lever
- Sink: under-mount, Corian
- Skylight hatch: Manship, smoked, with Oceanair screen and shade
- Toilet: Teema Silence Plus, fresh water flush through macerator
- Vanity: above-counter storage

Utility Room

- Utility Room Fridge & Freezer: Waeco RPD-215
- Bulkheads: Formica
- Engine room access: watertight door with viewing port
- Lockers: storage, port and starboard
- Sole: teak & holly
- Workbench: at starboard

Electrical

- Stern Thruster, Sleipner SidePower
- Washer & Dryer: Asko
- Ice maker: with teak locker at salon port aft
- Air horn: DC, AFI Marine
- Air-conditioning: Dometic Marine Air, reverse cycle, with compressors and blowers at salon (24k BTU), helm area (36k BTU), master cabin (16k BTU), fwd cabin (12k BTU), utility room and port cabin (12k BTU)
- Alarm and Indicator panel: mimicked boat profile LED panel, at lower helm
- Alarm panel: LED panel, at upper helm
- Batteries - Engines: one 24V bank, made of 2 units AGM Lifeline, 12V, 255Ah, with fiberglass boxes, lids and straps
- Batteries - Service: one 24V bank, made of 6 units AGM lifeline, 12V, 255Ah, In pair, with fiberglass boxes, lids and straps
- Battery - Generator: 1 unit AGM lifeline, 12V, 105Ah, with fiberglass box, lid and strap
- Battery charger - Engines: Mastervolt ChargeMaster 24/100-3, 24V, 100A, automatic
- Battery charger - Generator: Mastervolt ChargeMaster 12/35-3, 12V, 35A, automatic
- Battery condition Indicator: BEP, at electrical panel
- Battery disconnect switches: BEP, remote motorized
- Battery paralleling: BEP, dual sense Voltage Sensitive Relay (VSR), 125A
- Bilge pumps: four (4) units, DC, automatic, with high water alarms at helm(s), Rule Mate RM2000-24
- Bonding system: zinc anodes, on raw water cooling systems and heat exchangers
- Bow thruster: Sleipner Sidepower SEI70/250TC, DC, joystick controls at lower and upper helms
- Carbon monoxide detectors: in sleeping areas and salon, Seafire Marine
- DC converter: 24 -12V, 40A, Newmar
- DC outlets: 12V, two units, one at each helm
- Distribution panels: AC/DC, BEP
- Engine gauges and Instrumentation: Cummins, one Vessel View display at lower and upper

helms

- Engine room lights: DC, LED, Hella Marine
- Engine room ventilation: four blowers, DC, two Intakes on one Side, two exhausts on the other side of engine room, Delta "T"
- Engine start/stop: at lower and upper helms
- Entertainment system: (I) Bose AV35 surround sound, iPod Interface, blu ray player, speakers in salon with subwoofer, and (II) Pansonic 3D CD/DVD player
- Fresh water system: pressurized, DC, Groco Paragon Senior
- Generator: Onan with sound shield, e-QD series, 21.5 kW for 120V/60 Hz
- Holding tank - black water: polyethylene, 379 litre (100 US gallon) capacity; deck fitting for dockside pumpout; equipped with direct discharge pump, DC, Sealand Sani Pump T24
- Holding tank - grey water: polyethylene, 197 liter (52 US gallon) capacity, deck fitting for dockside pumpout, equipped with direct discharge pump, DC, SeaLand Sani Pump T24
- Holding tank - level Indicator: Dometic Sealand, model DTM, at lower helm station
- Ice maker: AC, Vitrifrigo 1M Hydro XTSI
- Inverter/charger: Mastervolt Mass Combi 24V/2500W-60, with remote panel at lower helm
- Isolation transformers: two units, SOA, Charles Marine
- Navigation lights: DC, LED, Hella Marine
- Outlets: AC, with GFCI protection, Vimar
- Rudder angle Indicator: DC, VDO Ocean Line
- Shore power Inlet aft: 1 x 50A, Glendinning cablemaster with 75 feet cable
- Shore power Inlet forward: 1 x 50A
- Tank monitoring: gauges for fuel and water tanks, display at (lower) helm, SmartSwitch TD4000
- Trim tabs: DC, Bennett
- TV prep: pre-Wire RG6 cable, from behind (lower) helm cabinet to salon, owner and guest staterooms
- Water heater: AC, 75 Litre (20 US Gallon) capacity, Seaward H-2050W
- Windshield wipers: washers, Intermittent-low-medium-high speeds, electronic touch control panel, Exalto
- Wiring: marine-grade tin -plated copper

Mechanical

- Twin MTU S-60 diesel engines at 825hp each
- Ball valves and thru hull fittings above waterline: bronze housings, chrome valves, Groco
- Bilge pump: manual, Whale Gusher Titan, 2 units
- Engine raw water intake strainers: Groco seawater filter kits 50-3000-5
- Engine room faucet: freshwater, cold only
- Engine room sole: teak slats
- Engine room sound Insulation: fiberglass wool, composite panels
- Exhaust system: Centek underwater outlet muffler, custom outlet cowling and Idle bypass
- Fire extinguisher: In engine room, with engine-generator-blower shut down and override control, Fireboy
- Fuel filters, Racor water separators on each engine (duplex) and generator (single)
- Fuel tanks: two aluminum tanks, baffled, total 5678 liter (1500 US gallon) capacity
- Generator exhaust system: with gas/water separator, Centek
- Oil change system: Groco pump, DC, Model G-3, with quick disconnect fittings
- Propellers: nickel-aluminum-bronze, dynamically balanced, 4 blades

- Seacocks: safety seacocks on engine raw water Inlets, Groco
- Shaft log: dripless, Packless Sealing System, PYI
- Steering: hydraulic, with Sea Star Power Assist system
- Struts: bronze with rubber bearings
- Water purification system: Seagull IV X-IF microbiological purifier with faucet, In galley
- Water tanks: two tanks, polyethylene, food grade, 1136 liter (300 US gallon) total capacity, Moeller Marine
- Watermaker: preparation only

Tender

- Custom Brig Eagle 380 with 50 HP Evinrude.
- Full steering consol
- Full Cover

Disclaimer

The Company offers the details of this vessel in good faith but cannot guarantee or warrant the accuracy of this information nor warrant the condition of the vessel. A buyer should instruct his agents, or his surveyors, to investigate such details as the buyer desires validated. This vessel is offered subject to prior sale, price change, or withdrawal without notice.

Photos



Starboard Profile



Port Profile



Overhead



Galley/Dinette/Salon



Island Queen VIP



Master Cabin



Master Looking fwd - Sistership Photo



Manufacturer Provided Image



Manufacturer Provided Image



Master Cabin - Sistership Photo



Salon/Galley/Pilothouse - Sistership Photo



Sistership Photo



Manufacturer Provided Image



Aft Cockpit - Sistership Photo



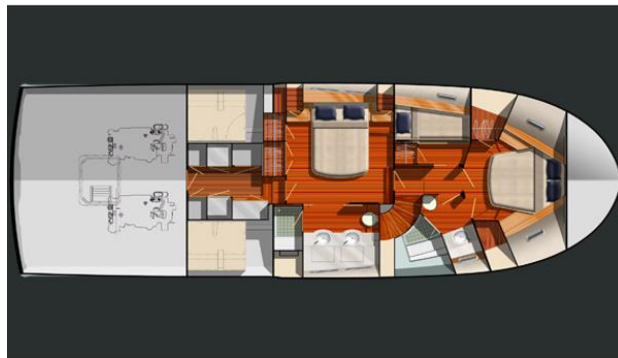
Flybridge and Boatdeck - Sistership Photo



Manufacturer Provided Image



Manufacturer Provided Image



Manufacturer Provided Image