



AT HOME ON ANY SEA™



Kadey Krogen – Far Reaches

Make: Kadey Krogen

Year: 2003

Price: \$ 1,050,000

Length: 58 ft

Beam: 18 ft 10 in

Draft: 5 ft 3 in

Location: FL, United States

Far Reaches

FAR REACHES is an impeccably maintained Krogen 58'. In 2015 she was completely Awlgrippped from the top of the mast to the waterline by American Custom Yachts, and all below deck service areas have recently been Awlgrippped. FAR REACHES' layout features a mid-ship master with a VIP guest stateroom forward, day head and separate office. She has served her owners well for months at a time on the hook in the Bahamas. Her self-sufficiency is further enhanced by virtue of her 700 gpd watermaker and 4 Kyocera solar panels.

FAR REACHES is absolutely ready-to-go in every respect.

Kadey-Krogen Yachts

610 NW Dixie Highway, Stuart, FL 34994, United States

Tel: 800-247-1230 yourcrew@kadeykrogen.com

Measurements

LOA:	63 ft 3 in	Ballast:	7000 lb
LWL:	52 ft 3 in		
Length on Deck:	58 ft	Displacement:	96830 lb
Beam:	18 ft 10 in	Displacement Type:	Half Load
Max Bridge Clearance:	25 ft 5 in	Fuel Tanks Capacity:	1760 gal
Max Draft:	5 ft 3 in	Fresh Water Tanks Capacity:	450 gal
		Holding Tank Capacity:	100 gal

Propulsion

Engine #1

Engine Make:	John Deere	Hours:	3065
Engine Model:	6068TFM	Power:	154 hp

Engine #2

Engine Make:	John Deere	Hours:	3065
Engine Model:	6068TFM	Power:	154 hp

Dimensions

Max Bridge Clearance: 25' 5" Mast Up
Displacement: 96,830 lbs.

Construction

Solid fiberglass below the waterline with Arimid-reinforced stem and stern bottom areas and vinylester resins used in first two (2) laminates. Above the waterline, a combination of Knytex, mat and Airex are used for added resiliency as well as improved sound and thermal installation.

The superstructure includes Knytex combined with end-grained balsa and/or Divinycell coring and surface mats (to reduce print-through). Cook gel coat is used on the superstructure. Teak aft and side decks. Boat deck and fore deck are finished with GripTex non-skid.

Freeman weather-tight doors and GEBO windows have been used throughout the vessel.

Saloon

The saloon is warm and inviting, yet large enough for stylish entertaining. Entrance is through double Freeman doors from the aft deck. Joinery and cabinetry all solid cherry throughout, including cherry parquet floors. To starboard is a large L-shaped settee with hi-lo folding table. To port are two (2) leather recliners and a bookcase/storage unit.

Galley

The galley is located forward of the saloon on the starboard side and is separated from the saloon by a Corian-topped counter. There is a Dutch-style Freeman door leading directly into the galley further facilitating the receiving of ship's stores. Galley components include:

- Jenn-Air side-by-side 23 cu.ft. refrigerator/freezer
- Broadwater 4-burner propane stove with oven
- GE trash compactor
- Miele dishwasher
- GE microwave oven
- Franklin Chef Wine refrigerator
- Double stainless steel sink
- Corian "Sahara" countertops

Accommodation Overview

FAR REACHES offers spacious accommodations for her owners and guests. There are 2 staterooms, 2 heads with stall showers, plus a day head and a private owner/captains office. The accommodations can be accessed from the saloon/galley, essentially a private entrance to the mid-ship master stateroom, and from the pilothouse which provides entrance to the master stateroom, guest stateroom and office. This arrangement allows total privacy for both owners and guests.

Master Stateroom:

FAR REACHES features a mid-ship master stateroom with a fore-and-aft queen size island berth, generous storage, entertainment center, hanging lockers and built-in bookshelves. There is a large en-suite head with oversized stall shower, Vacuflush head and Corian vanity top. This master suite is full beam, offering exceptional space in all areas.

Guest Stateroom:

The guest stateroom is located forward, and could easily be considered a second master stateroom due to its accommodations and space. There is a centerline queen size island berth, head with large stall shower, large hanging lockers, abundant drawer and locker storage, 4 opening ports and 2 large overhead hatches.

Office:

Located to starboard aft of the guest stateroom, this dedicated office allows the owners to take care of business without compromising other living areas of FAR REACHES. There is a built-in

desk with proper file drawers, generous locker storage, numerous bookshelves and an opening port.

Pilothouse

The pilothouse is located up and forward from the galley. Additional access is provided by port and starboard Freeman Dutch-style side doors. The visibility is excellent and the helm arrangement would be just as proper on a much larger vessel. Aft of the helm is a very large U-shaped settee with a teak table which converts to a queen-sized berth.

Electronics

- Furuno NavNet 1943C 64 mile color radar with ARP11/PG 10 target auto plotter
- Furuno 48" open array antenna & GP320B GPS/WAAS antenna
- Furuno NavNet (2 NEW) color chart plotter in PH and flybridge with GP320B GPS/WAAS antenna
- Furuno FAX 30 weather fax/navtex receiver with FAX 5 coupler and digital 530 antenna
- ICOM M802 SSB with AT-140 tuner, 23' Ocean Twin SSB antenna & copper counterpoise
- ICOM M602 VHF with DSC, Ocean Twin VHF antenna
- Uniden UM380 VHF
- ICOM HM-127 Commandmic with flybridge and wing station connections, PA-60 hailer/speaker
- ICOM M502 VHF with DSC in saloon
- ICOM HM-127 Commandmic with pilothouse connection
- Simrad AP-20 Autopilot with RC upgrade and C1300X backup KVH compass interface
- Simrad AP-22 Autopilot on flybridge
- Simrad FU-50 FollowUp control at wing station
- Simrad IS15 Combi / pilothouse and flybridge
- Simrad IS15 Analog wind system / pilothouse and flybridge
- Elbex CCTV - 2 b&w cameras in engine room / 1 color camera on aft deck
- Furuno NavNet video boards (2)
- Phillips LTC5104 video sequential switcher
- ACR 40 GPS EPRIB with auto-release mounted on flybridge

Entertainment

- KVH TracVision G4 satellite TV antenna
- Panasonic 42" plasma display with computer connection
- Hughes RF dss receiver
- BOSE Lifestyle entertainment system (CD/DVD/AM/FM)

Decks

Aft Deck--Includes a teak cap rail, teak deck, transom door, hot and cold freshwater cockpit shower, swim platform, portside boarding gate, very large lazarette storage, utility station with sink and 2 75' / 50 amp remote control Glendinning CableMasters.

Boat Deck--The boat deck is accessed via the portside pilothouse door. It includes the flybridge, dinghy storage, Nautical Structures power-rotating hydraulic davit, welded stainless steel railings, painted aluminum mast and boom with steaming and spreader lights.

Portuguese Bridge and Fore Deck--The starboard side deck and the pilothouse side doors lead to the Portuguese Bridge. There are wing station controls on the starboard side of the Portuguese Bridge. Double doors lead out to the fore deck. The fore deck includes welded stainless steel railings, water-tight anchor locker hatch, fresh and salt water washdown outlets and hydraulic Maxwell 3500 anchor windlass. Ground tackle includes a recently galvanized 140# Delta anchor with 200' of 1/2" chain and a 150# SuperMax adjustable anchor with 300' of 1/2" chain.

Engine Room and Mechanical Systems

The engine room can be entered through a water-tight door from the lower landing, through a water-tight door from the lazarette or from hatches in the saloon sole. The engine room is spacious, with a minimum of 5 feet of head room, well laid out and includes a work bench which contributes to the ease of systems checks and routine maintenance. Primary components of the engine room include:

- Twin John Deere 6068TFM, 154 hp diesel engines - 3065 hours
- Twin Disc 5075A transmissions
- Mathers electronic controls
- New engine starting batteries
- Dual Racor fuel filters with vacuum gauge for each engine
- Reverso oil change system
- ESI Fuel polishing system
- Seafire fire suppression system
- Flowscan fuel monitoring system
- ABT 25 hp hydraulic bow thruster
- TRAC hydraulic stabilizers

- Spare propellers

Electrical

- Northern Lights 20 kw generator - 911 hours
- Northern Lights 12 kw generator - 2009 hours
- New generator start batteries
- Racor fuel filters with vacuum gauges for each generator
- Seafire fire suppression system for each generator
- 12 - 6-Volt ship service batteries
- 2 - 12-Volt navigation/communication/electronics batteries
- 12 Volt automatic battery charger
- 24 Volt automatic battery charger
- 4 Kyocera 250 watt solar panels
- Xantrex CenterFielder alternator balancing system
- 2 4000 Watt Magnum inverter/chargers

Additional Components

- Givens 6-man life raft (Certification expired)
- 5-Zone reverse cycle air conditioning with Spectra Z-Guard electrostatic bioguards on raw water intakes and fresh water prime/flush system
- Line cutters on prop shaft
- Spectra Newport 700 24-Volt water maker (700 GPD) with Z-Brane, plankton pre-filter and heavy duty 50 micron pre-filter
- Headhunter Mach 5 120V fresh water pump
- Seagull whole boat microbial water filter
- UV whole boat sterilizer
- Portuguese Bridge wing station controls, including bow thruster controls, depth readout and autopilot control
- Stidd Admiral chrome helm chair
- Full canvas, including: pilothouse window covers, wing station cover, flybridge cover and anchor windlass cover.
- Bimini top with 3/4 flybridge enclosure (only used 4 months since new)
- Flybridge cushions
- Fore deck cushions

- Boat completely Awlgripped in 2015 by American Custom Yachts
- Below deck service areas Awlgripped
- Fresh bottom paint (11/15)

Exclusions

Owners' personal items, art work and tools. The name, FAR REACHES, is reserved.

Disclaimer

The Company offers the details of this vessel in good faith but cannot guarantee or warrant the accuracy of this information nor warrant the condition of the vessel. A buyer should instruct his agents, or his surveyors, to investigate such details as the buyer desires validated. This vessel is offered subject to prior sale, price change, or withdrawal without notice.

Photos



Aft Deck



Saloon Starboard Side



Saloon Port Side



Saloon



Galley



Server



Mid-Ship Master Stateroom



Master Stateroom



VIP Stateroom



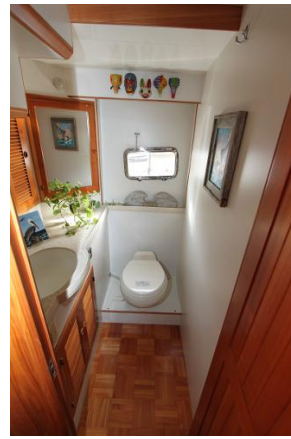
Office



Pilothouse Settee



Pilothouse Helm



Day Head



Engine Room Entrance



Engine Room Looking Aft



Foredeck



Boat Deck



Starboard Side Deck



Lazarette



ESI Fuel Polishing System



G A Rendering