



AT HOME ON ANY SEA™

<http://yachtworld.com/krogenyachtsales>

Master User  
610 NW Dixie Highway

Stuart, FL 34994 United States

Tel 800-247-1230

Tel 800-247-1230

Fax 772-286-8487

Email [yourcrew@kadeykrogen.com](mailto:yourcrew@kadeykrogen.com)



*Starlight*

### 52' Beneteau Swift Trawler 52

- Year: 2014
- **Current Price:**  
**US\$ 1,090,000** (09/15)
- Located in Annapolis, MD
- Hull Material: Fiberglass
- Engine/Fuel Type: Twin diesel
- YW# 6944-2764063

#### **RECENT PRICE REDUTION!!!!**

**Starlight** is a virtually new Beneteau Swift Trawler 52, is new to the market, and is available for cruising at any time. The owner has sights set on his next new vessel, and would like this current vessel sold.

She is very well equipped with factory & dealer options, and is a **MUST SEE** for anyone in search of a truly unique cruising trawler like no other.

As the longtime flagship of the BENETEAU power yacht range, the Swift Trawler 52 takes everything that makes sailing so adventurous and pleasurable, and combines it with the comfort and performance of a large power yacht to create a single and dazzlingly-brilliant package. This boat focuses on pleasure and enjoyment to reinvent the true spirit of the sea voyage.

## **Additional Specs, Equipment and Information:**

**Builder/Designer**

Builder: Beneteau

### Dimensions

LOA: 55.75 feet

Beam: 16.17 feet

Bridge Clearance: 21 feet

### Engines

Engine Power: 1200 HP

Cruising Speed: 20 mph @ 2000 RPM

Maximum Speed: 26 mph

### Tankage

Fuel: 1057 gallon

Water: 211 gallon

### Manufacturer Provided Description

The Swift Trawler 52 is a stunning combination of everything that contributes to adventure and the joy of cruising with the comfort and performance of a large powerboat, making it the perfect live-aboard. A boat providing pleasure and sensations, it will completely change your sea traveling experience.

### FACTORY & DEALER OPTIONS

- High Gloss Mahogany Finish
- Ultraleather Promessa in Salon - Woven Beige Exterior Seating Cushions
- Trim level: Avantage 2014 : Twin Cummins Power
- Remote Control Spotlight
- Flybridge Refrigerator - 42L
- Raymarine - Dual E125 MFD @ Lower Helm,
- Single E95 Upgraded to E125 @ Flybridge Helm
- Raymarine ST70 Multifunction Display - Depth, Speed, Temp
- Raymarine Autopilot
- Raymarine 650 AIS Receiver
- Mount 6 Person Liferaft Cannister
- Raymarine Radar Dome
- Aft Deck & Side Decks Teak Soles
- Raymarine Dual Station VHF Radio
- Generator 13.5kw upgrade w/cocoon
- Underwater Hull Light
- 110V Air Conditioner, Chilled Water System
- Corail Carpet in Wheelhouse and Owner Cabin
- Corail Carpet in Fore Cabin & Mid Cabin & Gangway
- Mosquito Nets for all doors and portholes
- 110V Shore Power w/Automatic retractable reel
- Safety Gear: Horn, Bell, 3 Fire Extinguishers, 6 Life Jackets w/Bag, Lifesling and Olin Flare Kit.
- Custom Flybridge Bimini Top, & Aft Skirts - Dune Canvas Color
- Factory Spec Besenzoni Hydraulic Tender Crane on Flybridge
- LCD TV's in Salon & Master,
- SAT TV with 2 RF Receivers
- Aft Deck, Port Side, & Engine Room Integrated Cameras
- Custom Interior Décor Package

## **MOORING - ANCHORING**

- &bull Anchor platform with stainless steel frame and solid wood boards
- &bull Bow fitting with twin roller
- &bull Horizontal electric windlass Lofran Falkon 1500 W (chain grab for 12mm chain and gipsy head for buoy line)
- &bull Mooring cleat underneath
- &bull Peel strength of windlass 1600kg - speed 17m/min
- &bull Remote control in mooring locker + windlass control from wheelhouse and flying bridge steering stations
- &bull 2 Mooring lockers
- &bull 2 Stainless steel fairleads
- &bull 2 Stainless steel mooring bollard on foredeck
- &bull 4 Stainless steel mooring cleats (2 amidships - 2 aft)
- &bull Bench on foredeck with 2 lockers for storing fenders and mooring ropes

## **ON DECK SAFETY**

- &bull Stainless steel 2 level pulpit with stainless steel guardrails at rear of deck
- &bull Access to foredeck through door in Portuguese bridge
- &bull Stainless steel guardrail on the front of wheelhouse windscreen for safety on Portuguese bridge
- &bull Cockpit pulpit in stainless steel and solid wood
- &bull On flying bridge: Stainless steel pulpit completely surrounding aft of flying bridge with stainless steel guardrails on snap shackles to facilitate launching of dinghy and life raft

## **COCKPIT**

- &bull Self-bailing cockpit
- &bull 2 Alleyway doors to protect cockpit from wind and spray
- &bull Stainless steel stanchion on flying bridge

- &bull L-shaped cockpit bench seat decked in solid wood
- &bull Large cockpit locker with companionway ladder for access to lazarette, engine room and sailor cabin (optional extra)
- &bull Outside ladder for access to flying bridge (secondary access - solid wood steps and twin stainless steel handrail)
- &bull 220V 50Ah shore supply with 20m cable
- &bull Access door to aft swim deck
- &bull Solid wood decked swimming platform with stainless steel area guards and handles to fasten dinghy
- &bull Retractable ladder in swimming platform with solid wood steps and stainless steel handrails
- &bull 4 Tallon marine receivers

## **FLYBRIDGE**

- &bull Inside stairs to flying bridge from wheelhouse
- &bull Sliding hatch cover in grey-tinted PMMA, foldaway solid wood doors with fastening and blocking system
- &bull Grey tinted windscreen in PMMA
- &bull Steering console with: Steering compass - Steering wheel - Electric engine controls, tiller angle indicator - tachometers - Fuel gauges - 12 V socket
- &bull Controls for bow and stern thruster, windlass, flaps, lighting, navigation lights and foghorn
- &bull 12 V socket
- &bull Adjustable, swivel Bezenzoni pilot seat with armrests
- &bull Removable flying bridge saloon table with teak insert convertible into sundeck
- &bull U-shaped bench seat with storage lockers
- &bull Cloth cushions and backrests PVC &ldquoColumbia&rdquo
- &bull Stainless steel guard rail
- &bull Console cover Fly + Seat of Fly
- &bull Worktop with sink and hot and cold water mixer tap under pressure
- &bull Flybridge Refrigerator

- &bull Storage space
- &bull FLYbridge electric grill
- &bull Polyester hoop bar with fitted spotlights and loudspeakers
- &bull Supports aerials, radar and bimini top (optional extras)
- &bull Quarterdeck for storing dinghy or for use as terrace / Sun deck
- &bull Structurally reinforced position for installation of Bezenzoni electric crane offered as optional extra to lift dinghy (max load 400Kg)
- &bull Fixing plates for dinghy
- &bull Companionway hatch in PMMA for direct access to cockpit with stainless steel stairs and solid wood steps
- &bull Space for life raft with stainless steel fixing bolt plates
- &bull Flag pole bracket on starboard aft pulpit

## **SALON**

- &bull Aft 2 leaved sliding door window with curtains and stainless steel frame
- &bull Sliding, opening side windows with blinds and stainless steel frame
- &bull U-shaped bench seat with cushions and backrests
- &bull Storage under bench seats
- &bull Varnished wood saloon table, electrically adjustable height
- &bull 2 Removable armchairs
- &bull Bar unit with storage and space provided for an encased 32 inch LCD TV (optional)
- &bull Storage cupboard with drawer and cubbyholes
- &bull Leather covered stainless steel handrail on ceiling

## **GALLEY (IN A U-SHAPE ON PORTSIDE)**

- &bull Sliding window with blind in front of sink
- &bull Resin worktop with stainless steel 2 basin sink, washing up drainer and bin access
- &bull Mixer tap with hot/cold water under pressure
- &bull 175 liter refrigerator + 45L freezer fitted into wooden cupboard to starboard
- &bull Choice of 3 hob glass ceramic plate with saucepan brackets or gas cooker
- &bull Gas or microwave cooker
- &bull Gas storage locker provided in port alleyway
- &bull Rubbish locker accessed from alleyway
- &bull Extractor hood
- &bull Dishwasher 6 persons
- &bull Plentiful storage with cubbyholes and cutlery drawer
- &bull Suspended shelf above worktop between galley and saloon
- &bull Halogen spotlights and 220V sockets
- &bull Wheelhouse access step with leather covered stainless steel handrail

## **PILOTHOUSE STATION**

- &bull Raised steering station
- &bull Grey-tinted glass windscreen with 3 speed demister system
- &bull Stainless steel windscreen wipers with washer
- &bull 2 Sliding doors for access to catwalks
- &bull 2 Windows with blinds fitted to either side of wheelhouse
- &bull Inside access stairs to flying bridge with varnished wood handrail
- &bull Lewmar T44 opening hatch in wheelhouse ceiling
- &bull Electrically adjustable Bezenzoni pilot armchair with retractable footrest
- &bull Leather covered steering wheel in stainless steel
- &bull Hydraulic assisted steering

- &bull Ergonomic steering console, space for navigation electronics, and engine instruments
- &bull Smartcraft engine repeaters with tachometers, pressure, temperature indicators, and fuel gauges
- &bull Tiller angle indicator
- &bull Flap indicators
- &bull Electric engine control levers
- &bull Steering compass
- &bull Functional controls: Wiper, Demister, Fog horn, Navigation lights, Anchoring, Thrusters, Windlass
- &bull 220 V socket to starboard
- &bull 12V socket
- &bull Wide copilot bench seat with wooden shelf, stainless steel handrail and footrest, large storage space under bench
- &bull Chart table to port, with drawer and storage space, reading spotlight, 220 V socket
- &bull Electrical panel 24 V and 220 V
- &bull CD/MP3 radio with 2 loudspeakers in wheelhouse and 4 waterproof speakers outside (2 in the cockpit - 2 on flying bridge)
- &bull Companionway stairs to cabins and washroom with leather covered stainless steel handrail
- &bull Extensive space under steering station with windscreen washer tank and access to all control panel connexions, ceiling lighting

### **OWNER CABIN (CENTRED AMIDSHIPS)**

- &bull 2 Large fixed panoramic hull portholes with fitted opening portlights and curtains
- &bull Large central bed (2,02m x 1,70m) with lathed bed base and marine mattress
- &bull Background lighting with brightness adjustment and bedside lamps
- &bull Storage
- &bull Cubby hole lockers

- &bull Hanging locker
- &bull Drawers
- &bull Mirror
- &bull Leather covered stainless steel handrail
- &bull Desk and seating to starboard
- &bull Access door to private bathroom
- &bull 220 V socket

### **VIP GUEST CABIN - FORWARD**

#### **GUEST CABINS (FORWARD)**

- &bull Bunks type Island Bed
- &bull Marine mattress
- &bull Storage, Hanging locker, Drawers
- &bull Lighting and reading spotlights
- &bull 1 Opening hatch Lewmar T44
- &bull 2 Opening hull portholes with curtains
- &bull Bedstead mirror

### **CABIN (TO PORT) DRESSING ROOM VERSION**

- &bull Raised single berth with plentiful storage space, cubbyholes and hanger closet underneath
- &bull Direct access door from master cabin to dressing room & Access door at foot of companionway stairs
- &bull 2 opening portholes

### **2 HEAD COMPARTMENTS**

- &bull Shower cubicle completely counter moulded with opaque plexiglass door



- &bull Fitted seating, decked in solid wood
- &bull Opening hull porthole and mechanical ventilation
- &bull Waste water drained by gravity to buffer tank (50 l)
- &bull Electric Vacu-flush toilet with sewage tank in cockpit
- &bull Opening hull porthole
- &bull Mixer tap with hot/cold water under pressure
- &bull Mirror
- &bull Toilet accessory rack

## **ENGINE ROOM & ENGINES**

- &bull 2 Engines CUMMINS QSC8.3 600hp, Inboard Shafts
- &bull Maximum engine speed: 2500 rev/min (reduced emission and reduced consumption for greater range at all engine speeds)
- &bull Foam soundproofing in engine compartment
- &bull Side air intakes
- &bull 2 Electric engine hold ventilators
- &bull Stainless steel shaft lines with end anodes
- &bull Fuel tanks: 2 x 530G with interconnection
- &bull 4 blade propellers
- &bull Access door to engine compartment in cockpit bay
- &bull Extinguishers in engine hold with remote controls
- &bull Inert gas system for engine protection
- &bull Ceiling lighting
- &bull Central batteries under aluminium floor
- &bull ONAN 13.5 kw Generator

## **ELECTRICAL**

- Electrical panel 24 V / 220 V
- Electrical battery switches
- 220 V shore supply with 20m extension lead
- 220 V sockets in saloon, galley, wheelhouse and cabins
- Battery charger 60 Ah
- Inverter 12V/ 24V
- 12 V sockets on flying bridge and in wheelhouse
- 4 Engine batteries 75 Ah (Gel batteries)
- 4 Service batteries 140Ah and 4 batteries 75Ah (gel) dedicated to thrusters
- Bow and stern thrusters: MaxPower 160kg thrust, tunnel diameter 250mm
- Lofran Falcon 1500 W Electric windlass (1600kg peel)
- Electric trim tabs Lenco
- Auto radio CD/MP3 player
- Navigation lights in stainless steel
- Mooring light
- 3 Electric windscreen wipers
- 2 Automatic electric bilge pumps
- 2 Engine hold ventilators
- Electric water heater on shore supply or on engine exchanger
- Inside lighting, cockpit, alleyways and flying bridge
- Light dimmers in saloon, cockpit, alleyways, wheelhouse and master cabin
- Generator: 1 Starter battery 110Ah and battery charger 25Ah
- Electric Bezenzoni armchair in wheelhouse

## **Disclaimer**

The Company offers the details of this vessel in good faith but cannot guarantee or warrant the accuracy of this information nor warrant the condition of the vessel. A buyer should instruct his agents, or his surveyors, to investigate such details as the buyer desires validated. This vessel is offered subject to prior sale, price change, or withdrawal without notice.

*Last Revised: Oct 23, 2015*



> Beneteau Swift 52 - In her Slip



> Beneteau Swift 52 - Stern Quarter



> Beneteau Swift 52 - Stern



> Beneteau Swift 52 - Aft Cockpit



> Beneteau Swift 52 - Port Walkway



> Beneteau Swift 52 - Walkway Storage



> Beneteau Swift 52 - Bridge Access Door



> Beneteau Swift 52 - Foredeck



> Beneteau Swift 52 - Foredeck Seating



> Beneteau Swift 52 - Foredeck Seating Storage



> Beneteau Swift 52 - Bridge Deck

> Beneteau Swift 52 - Aft Cockpit Storage Area



> Beneteau Swift 52 - Aft Cockpit Storage Area



> Beneteau Swift 52 - Aft Cockpit Genset



> Beneteau Swift 52 - Engine Room to Port



> Beneteau Swift 52 - Engine Room to Starboard



> Beneteau Swift 52 - Engine Room - Hot water heater and Fire Suppression



> Beneteau Swift 52 - Engine Room



> Beneteau Swift 52 - Flybridge Rear Access



> Beneteau Swift 52 - Flybridge Dinghy and Crane



> Beneteau Swift 52 - Flybridge Helm and Seating



> Beneteau Swift 52 - Flybridge Instrumentation



> Beneteau Swift 52 - Flybridge Helm Chair



> Beneteau Swift 52 - Bimini



> Beneteau Swift 52 - Flybridge Sink, Fridge and Grill



> Beneteau Swift 52 - Flybridge Sink, Fridge and Grill



> Beneteau Swift 52 - Main Salon Seating



> Beneteau Swift 52 - Main Salon Looking Forward



> Beneteau Swift 52 - Main Salon Additional Seating and Storage



> Beneteau Swift 52 - Main Salon Pop-up TV



> Beneteau Swift 52 - Galley



> Beneteau Swift 52 - Galley Counter



> Beneteau Swift 52 - Fridge



> Beneteau Swift 52 - Main Salon Looking Aft



> Beneteau Swift 52 - Inside Steering Station



> Beneteau Swift 52 - Map Desk





> Beneteau Swift 52 - Forward Facing Steering area Lounge



> Beneteau Swift 52 - Inside Helm Chair



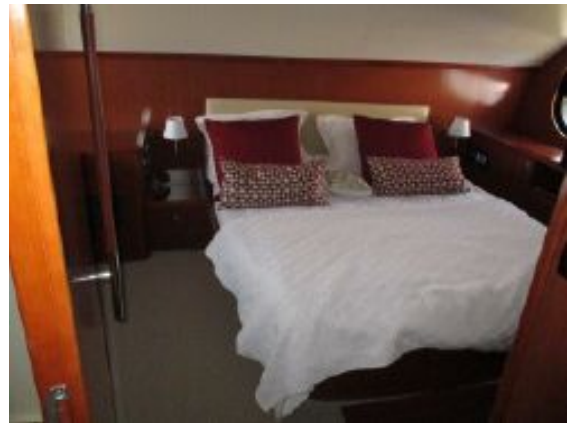
> Beneteau Swift 52 - Forward VIP Guest Stateroom with centerline Berth



> Beneteau Swift 52 - Walk-in Closet and Storage Room



> Beneteau Swift 52 - Walk-in Closet and Storage Room



> Beneteau Swift 52 - Owner's Centerline Berth



> Beneteau Swift 52 - Owner's Cabin to Port



> Beneteau Swift 52 - Owner's Cabin to Starboard



> Beneteau Swift 52 - Owner's Cabin TV